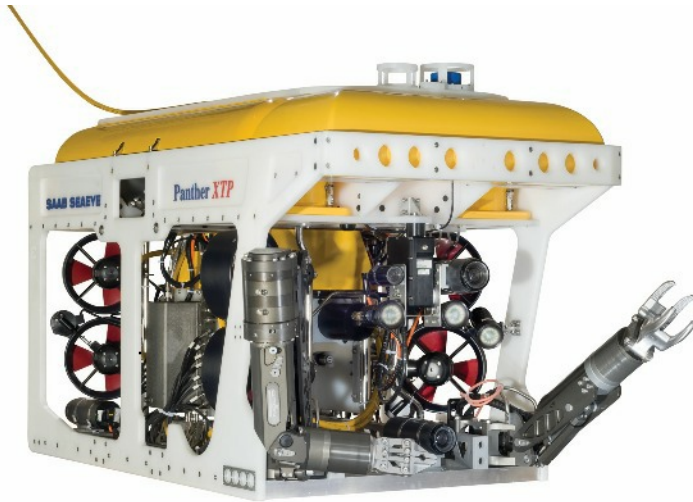


## Panther - XT Plus

### Electric Work Class ROV



#### Features

- 1000 metres Depth rating
- Propulsion 8 x vectored horizontal and 2 x vertical
- 150 kg payload
- 53 kgf thrust
- Cable and Pipe tracking survey equipment options
- LARS and TMS.

The Seabeed Panther-XT Plus is a high performance Electrically Powered Remote Operated Vehicle (ROV) designed for work and survey tasks in demanding environments.

Fitted with 10 SM7 thrusters Panther-XT Plus has the ability to handle stronger currents than other ROVs. The Schilling Orion manipulators allow complex work tasks to be carried out.

The Panther-XT Plus is complete with a "garage" TMS (Tether Management System), an "A" Frame Launch and Recovery System (LARS) and an integrated control and workshop container.

The new high performance Panther-XT Plus combines the capability of precision manipulative tasks with operation in high currents, whilst maintaining a very compact package and footprint.



# Panther - XT Plus

## Technical Specifications

### Remotely Operated Vehicle

---

Manufacturer	Saab Seaeye Ltd
Depth rating	1000 msw
Power Requirements	3-phase 380-480 VAC at 37.5kVA
Length	2140 mm
Height	1217 mm
Width	1060 mm
Launch weight	800kg
Forward speed	>4 knots
Thrust forward	353 kgf
Thrust lateral	248kgf
Thrust vertical	105 kgf (std)
Payload	150kg
Propulsion	10 SM7 Brushless DC thrusters 8 x vectored horizontal and 2 x vertical
Auto Functions	Depth and Heading
Heading Control	0.5 degrees
Depth Control	0.1% FSD
Lighting	4 x LED Lamps (total equivalent to 800W halogen)

### Vehicle Equipment Fit

---

Camera System	1 x Kongsberg Colour Zoom Camera (18:1) 1 x Kongsberg HD Enhanced CCD B & W Camera 1 x Bowtech L3C-650 Colour Camera with LEDs
TMS cameras	1 x Seaeye mini B & W Camera 1x LED Light
Sonar	1 x Tritech Super SeaKing 1 x Tritech Gemini 300
Manipulators	1 x Schilling ORION 7P 1 x Schilling ORION 4R
Optional Equipment	Innovatum Smartrak Super SeaKing DFP Emergency Strobes

The Panther is very Versatile - should you Have a specific tooling Requirement please get in touch



All specifications are subject to change in line with Innovatum's policy of continual product development

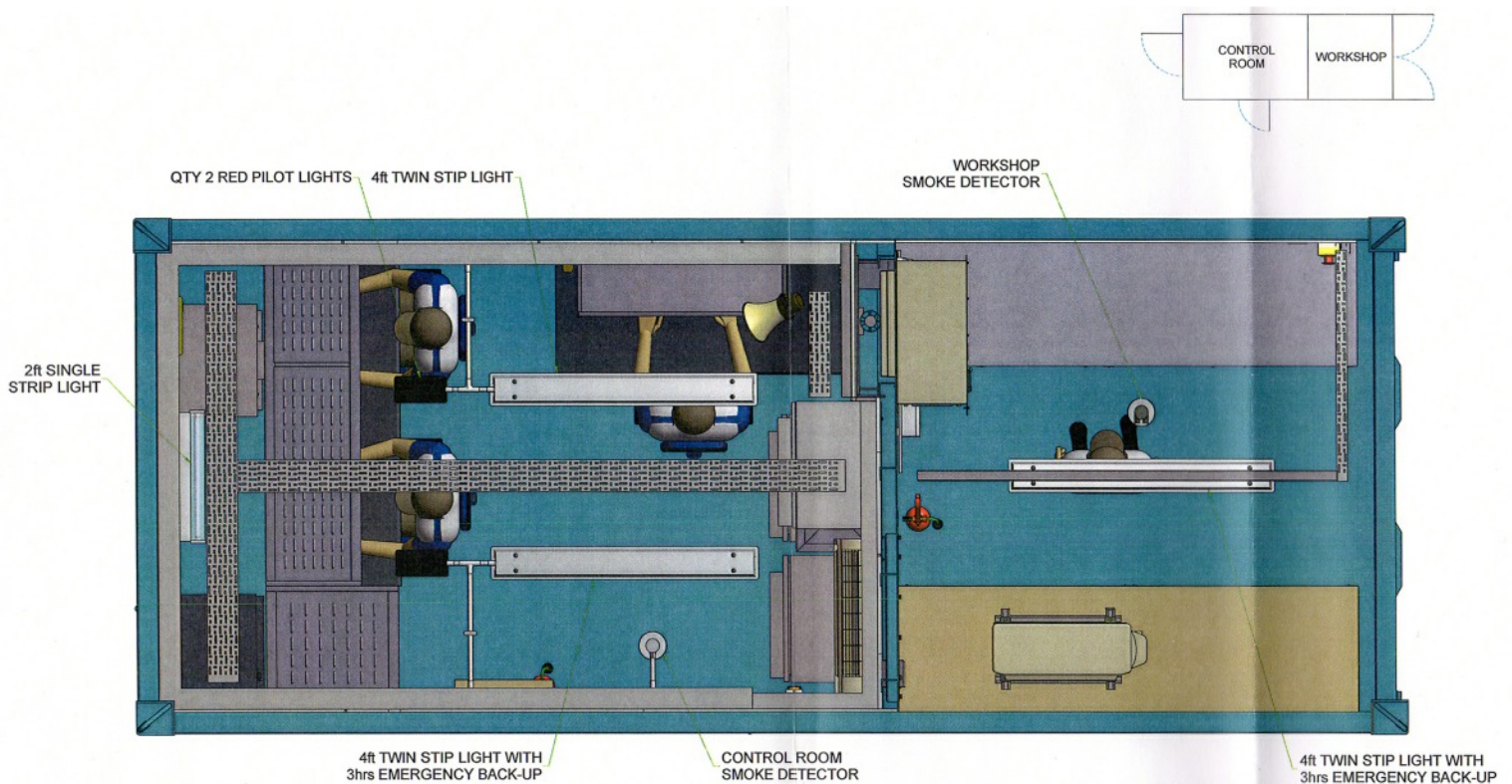
# Panther - XT Plus

## ROV Control Container / workshop

The control container is designed to provide facilities for personnel to operate ROV systems from a safe comfortable environment. It's also the hub for interfacing ROV operational communications, video distribution and inspection data gathering.

### Specifications:

- Built to BSEN 12079 and DNV2.7-1 for offshore lifting and sea state 6
- Length 6 meters x Width 2.4 meters x High 2.7 meters
- Fork lift pockets built within the base structure
- Dedicated lifting slings and shackles
- ISO corner casting to the base structure
- Integral workshop to one end as shown below





# Panther - XT Plus

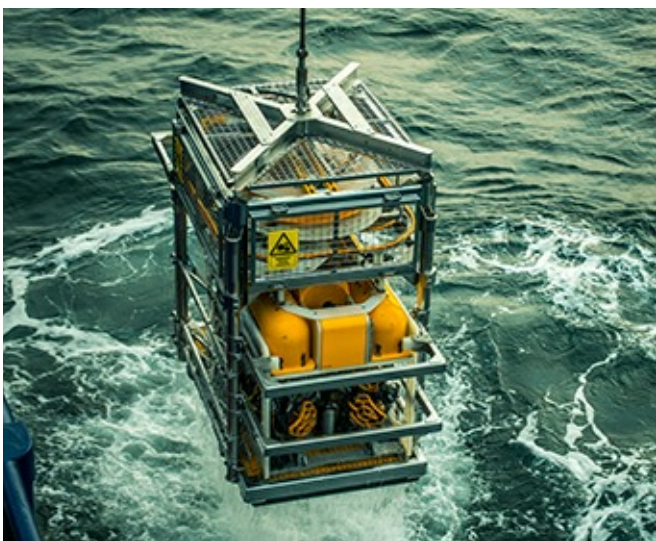
## Launch and Recovery System (LARS)



### LARS Specifications:

- Length - 6 meters
- Width - 2.4 meters
- Transit height - 3.4 meters
- Maximum Shipping weight - 22 Tonnes
- Actual shipping weight - 19 Tonnes
- Built to - BSEN 12079
- Maximum umbilical length - 1600 meters

## Tether Management System (TMS)



The Type 8 TMS is made from Stainless Steel and designed to be operated in harsh environments. The TMS is used primarily to deploy the Panther safely to the operational depth where it will be working.

Excursion capacity - 200 meters

Depth Rated - 2000 meters

TMS equipped with - 1 x lights and 1 x camera